

### Why stay at Carlisle Bay, Antigua?

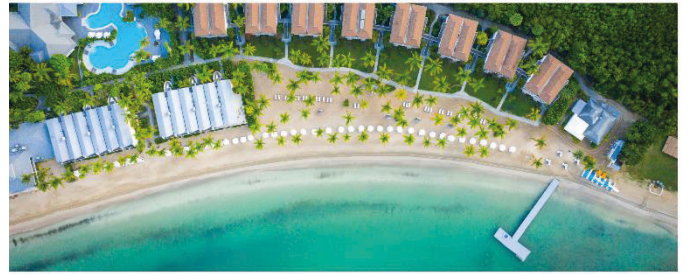
- A haven of 5-star luxury with genuine Caribbean warmth and hospitality. Situated on a stunning horseshoe bay on the southwestern shore of the Island of Antigua. Step out from your suite directly onto pure white sands and turquoise waters of the Caribbean Sea. Carlisle Bay is affiliated with Leading Hotels of the World, Virtuoso, Select and Signature Travel Network.
- Enjoy an array of activities on property including water sports, a private yacht available to charter, ESPA treatments at CARA Organic Beauty Spa, tennis clinics, yoga and Pilate's sessions and a kid's club for the little ones.

### Location

- Situated on the magnificent unspoilt south coast of the Island of Antigua, Carlisle Bay is set against a dramatic backdrop of rolling hills and lush tropical rainforest. The resort is a thirty-minute drive from V.C. Bird International Airport.

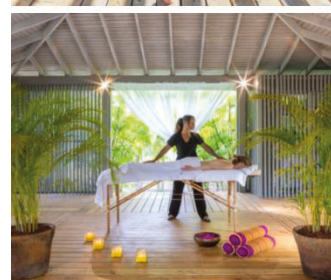
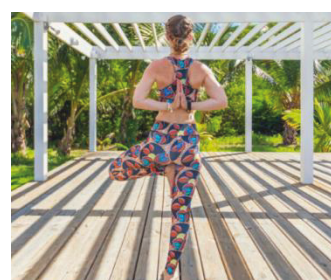
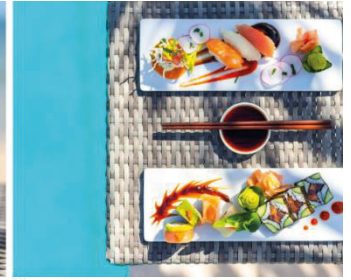
### All suite accommodation

- The resort offers 87 ocean facing suites all luxuriously presented in a contemporary, elegant style:
  - 6 Garden Suites, 72 m<sup>2</sup> (770 ft<sup>2</sup>). Open plan suites with living space, partial ocean views. Sleeps 3. Interconnecting rooms also available.
  - 36 Ocean Suites, 72 m<sup>2</sup> (770 ft<sup>2</sup>). Open plan suites with living space. Ideal for guests looking for serenity and exceptional sea views. Sleeps 3.
  - 6 Bay Suites, 72 m<sup>2</sup> (770 ft<sup>2</sup>). Specifically designed for romantic stays, best beach location and inclusive of personalised concierge service. Sleeps 2.
  - 17 Beach Balcony Suites, 68 m<sup>2</sup> (730 ft<sup>2</sup>). Two bedroom (one twin and one king sized double), perfect for families. Sleeps 4 (2 adults 2 children).
  - 18 Beach Terrace Suites, 68 m<sup>2</sup> (730 ft<sup>2</sup>). Ground level directly on to the beach. Two bedroom (one twin and one king sized double), perfect for families. Sleeps 4 (2 adults 2 children).
  - 4 Carlisle Suites, 246 m<sup>2</sup> (2644 ft<sup>2</sup>). Two king size double rooms & 1 twin room with large beachfront terrace and. Sleeps 6 persons.



## Facilities on site

- The resort benefits from three bars and four outstanding restaurant options including:
  - Indigo on the Beach, an open-air pavilion, open for breakfast, lunch and dinner. Offering fresh local produce.
  - Ottimo! Casual Italian at the poolside, open for lunch and dinner.
  - EAST offering Pan-Asian dishes and available for dinner.
  - Jetty Grill, an adult's only restaurant with seafood and grill, at the water's edge available for dinner only.
- Complimentary non-motorised water sports including sailing, kayaking, snorkelling, windsurfing and paddle boarding. Private charters are available on the resort's luxury FJORD36 motor yacht.
- CARA Organic Beauty Spa, tranquil retreat with 6 treatment rooms including a luxurious massage room for couples, sauna, hair salon and treatments from luxury spa brand ESPA.
- Fitness centre with Technogym equipment and a team of personal trainers on request. A separate Yoga Pavilion where guests can enjoy yoga and Pilate's sessions, located in the tranquillity of the tropical gardens.
- The resort has private tennis courts including 2 which are floodlit for cooler play in the evenings and a pickleball court. Professional instruction is available at all levels and complimentary tennis clinics.
- Cool Kids Club is open 7 days a week from 2–7-year-olds and for older children the resorts Crew Blue and Crush programmes are available.
- The resort's gift shop and Bay Boutique are open daily with day-to-day items for any essentials required and luxury branded items including Heidi Klein and Love Brand swimwear.
- Carlisle Bay is ideal for romantic Caribbean themed weddings and for private events including the option of exclusive use for incentives or corporate groups. The Carlisle Meeting room can hold up to 50 guests, and dining space is available up to 200 guests.





# CARLISLE BAY

ANTIGUA

## Our Events Space

Event Space	Lunch / Dinner	Reception	Theatre	Boardroom	U-shape	Size of meeting room space (square foot)
-------------	----------------	-----------	---------	-----------	---------	--

### COCKTAILS

Jetty	200	200	-	-	-	25ft x 25ft - 625sq ft
Indigo on Beach (Upper level only)	100	100	-	-	-	66ft x 33ft - 2178sq ft
Poolside	80	120	-	-	-	80ft x 50ft - 4000sq ft
Coconut Grove	120	120	-	-	-	60ft x 50ft - 3000sq ft

### RECEPTION / BANQUET

East	70	100	80	50	40	40ft x 40ft - 1600sq ft
Indigo on the Beach (upper level)	80	100	-	-	-	66ft x 33ft - 2178sq ft
Indigo on the Beach (lower level)	180	200	-	-	-	80ft x 48ft - 840sq ft
Indigo on the Beach (upper & lower level)	260	300	-	-	-	25ft x 25ft - 625sq ft
Jetty Grill	50	50	-	-	-	11ft x 11ft - 132sq ft
Pavilion	200	200	-	-	-	40ft x 28ft - 1120sq ft
Jetty Lawn / Beach	120	120	-	-	-	90ft x 90ft - 8100sq ft

### MEETING SPACE

Screening Room	-	-	45 (can hold 65 with additional chairs added)	-	-	25ft x 26ft - 650sq ft
East	-	-	80	50	40	40ft x 40ft - 1600sq ft
Carlisle Room	50	50	60	26	20	10ft x 24ft - 960sq ft
Pavilion	-	-	150	120	120	40ft x 20ft - 1120sq ft